



ellucian.

# Banner XE Experience

Mississippi BUG

September 16, 2013

Presented by: Ed Hauser

Director for Enrollment & Student Services

# Agenda Slide

---

- Banner Update
- Ellucian XE
- Banner XE & Roadmap
- XE Applications Available Today
- XE Development Partners
- XE Applications in Process
- Q & A

# Roadmap Framing and Confidentiality

---

This information provides a general strategic view of Ellucian's anticipated future offerings. The information in this document is confidential and proprietary to Ellucian and neither the document nor its contents can be disclosed to anyone without a written obligation of confidentiality in place with Ellucian.

The information in this document is not a commitment, promise or other obligation to deliver any material, code or functionality, and it should not be relied upon in making any purchase decision. The document and its contents are subject to change, without prior notice, at the sole discretion of Ellucian.

# Banner Update

---

- **Banner 8.x Focus**

- **Quality**

- Defect resolution on high volume service requests

- **Technical Currency**

- Ensure all constituents are able to access information through the browser of their choice
    - Ensures the institution stays current on updated versions of key technology components across the Banner XE solution

- **Banner XE**

- Align with student team and release cadence to support Banner XE Applications

# Banner General 8.5.x and 8.6 releases

- Common Matching, Security, MEP (Banner General 8.5.1)
- Cookie Expansion (Banner General 8.5.1.1)
- Signed JAR Files (Banner General 8.5.1.2)
- Event Management 9.1 Support (Banner General 8.5.1.3)
- 11gR2 and Web Util Support (Banner General 8.5.1.4)
- Security Auditing, GJIREVO Multi-Delete, SDE (Banner General 8.5.2)
- Integration Components Support (Banner General 8.5.2.1)
- HR Support (Banner General 8.5.2.2)
- Banner 9 Support (Banner General 8.5.2.3)
- GTVSDAX Documentation Moved Online (Banner General 8.5.2.5)
- Prevent users from entering 'unwanted' data in Address fields
- Multiple security enhancements including Preventing accidental deletion of grants and enabling INB Terms of Usage Agreement
- Rollup of patches from multiple prior releases for more streamlined support for Banner XE

## 37 RPEs in the following areas

### Features

- **Support for Banner XE**
- **Common Matching**
- **Documentation**
- **Job Submission**
- **MEP**
- **PCI**
- **Proxy**
- **SDE**
- **Security**

# Web General 8.5.1, 8.5.2 and 8.6 releases

- Proxy Enhancements for Delete and UI changes (Web General 8.5.1)
- SSB Phone Data Entry Restrictions, Proxy Enhancements (Web General 8.5.2)
- Prevent users from entering 'unwanted' data in Address fields
- Ability to optionally send New Proxy and Delete Proxy communications for the Global Proxy Access process

## Features

**7 RPES addressed in the areas of Data Entry and Proxy**

# Banner Student Community Education

---

- Help all institutions maximize and gain the greatest benefit and value from their existing investment in Banner Student
  - Measurably improve business operations
  - Measurably improve customer satisfaction
- Benefits
  - Learn about new and improved features from peers
  - Gain insight into how other institutions are using and benefiting from specific features and functionality
- Session recordings found in the Ellucian Commons

# Topics Suggested and Webinars Scheduled to Date

- **Archiving application of payment records\***
  - **October 29<sup>th</sup>, 2013**
- **Application checklist for community colleges\***
- Veterans processing
- Faculty feedback
- **Web for Proxy\***
  - **September 6<sup>th</sup>, 2013**
- Banner refund process
- **Online degree application\***
- How to use Banner APIs
- Any Banner technical webinars
- Extending your database
- Better understanding of the billing process
- Location Management
- Fee Assessment
- BDM usage tips for the Registrar's office
  - **July 17<sup>th</sup>, 2013**
- Student centric periods
- Study paths
- FGAC and VBS

**\* More than one request**



# Ellucian eTranscript

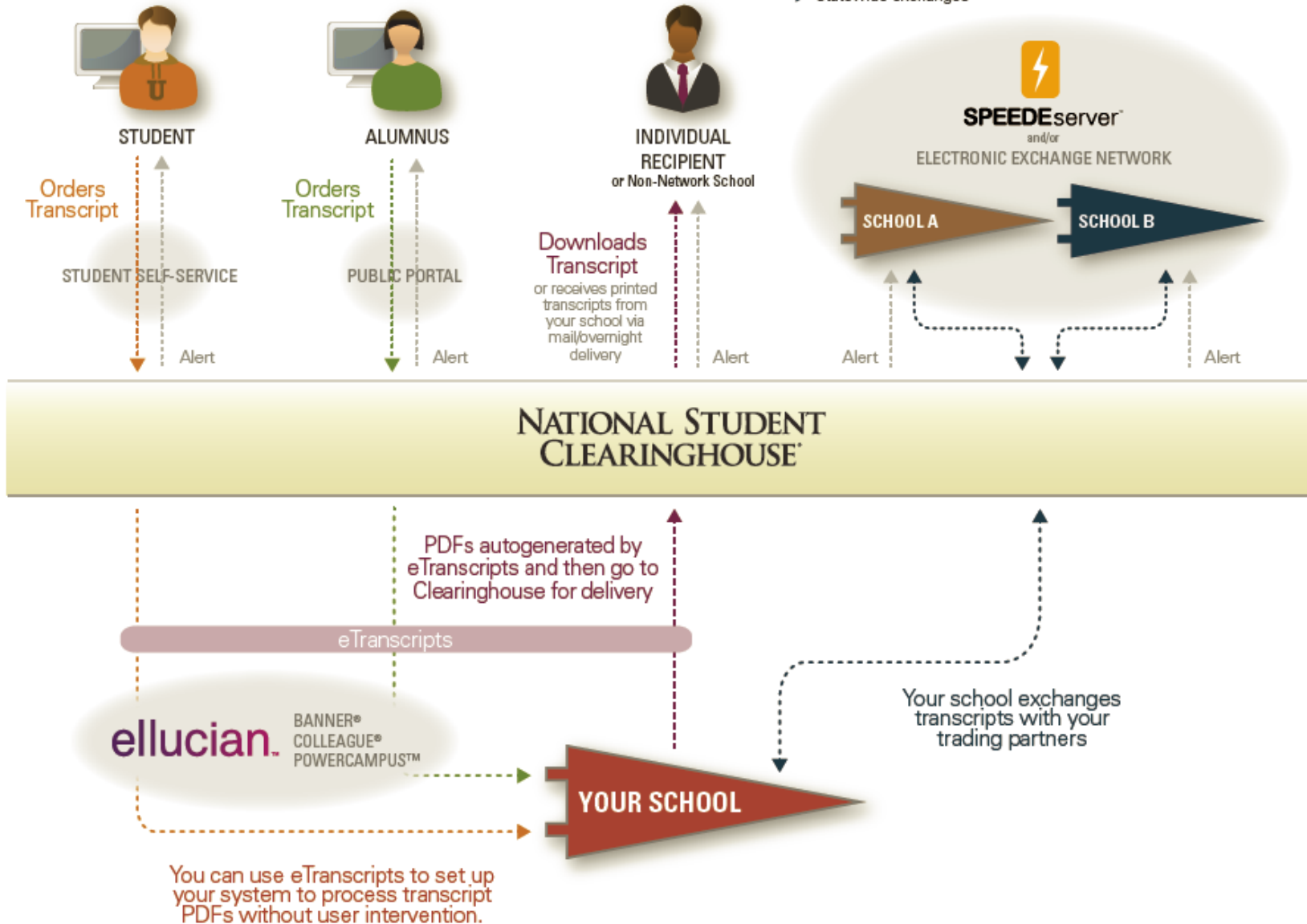
---

- Partnership with National Student Clearinghouse
- Electronic transcript order and delivery capabilities
  - “Touch-free”, real-time, secure
- Order transcripts from the Clearinghouse public site
  - Or via Student Self Service
  - Orders are sent via the eTranscript API into Banner Student
- Available at no cost and requires no additional software
- Delivers on Ellucian XE vision
  - Enabling extensibility across Ellucian student systems

## School to School/Agency

- ▶ College to college
- ▶ College to educational agency (e.g., nursing, teaching, accrediting agency)
- ▶ High school to college
- ▶ High school and college to state office
- ▶ Systemwide exchanges
- ▶ Statewide exchanges

## Student to Individual Recipient



# Banner Requirements for eTranscripts

---

- To use eTranscripts, each school must:
  - Install Banner Database Extension Utility (DBEU)
  - Upgrade to Banner Student 8.6
  - Upgrade to Banner Student 8.6.2
    - This release includes eTranscript function
  - Be active with Clearinghouse Transcript Ordering
- Projected release schedule Q4 2013

# Upcoming Releases in 2013

---

- Banner Student 8.6 – Q4 2013
- Banner General 8.6.2 (Controlled) – Q4 2013
- Banner XE Advising 9.0 – Q4 2013
- Banner XE Registration
  - Controlled Release – Q4 2013
- Banner Student 8.6.2 - eTranscript – Q4 2013



---

# Ellucian XE

# Trends Shaping Higher, Further and Vocational Education

Revenue  
Pressures and  
Austerity



Accountability  
and Outcomes



Engaging  
Students



Globalization



Education  
Access and  
Readiness



Transformative  
Technology



# A Bright but Turbulent Future



The Student  
Experience



Accountability  
and Outcomes



Funding,  
Processes,  
Efficiencies



Transformative  
Technology

How are you addressing these challenges?

# Ellucian Extensible Ecosystem (XE)

---

- A vision for how we help institutions thrive during a time of dynamic change
  - An extensible and evolving ecosystem of solutions and services
  - An architectural strategy grounded in common principles and standards
  - A portfolio approach that accelerates innovation
  - A better way for customers to evolve their technology environments and protect their investments



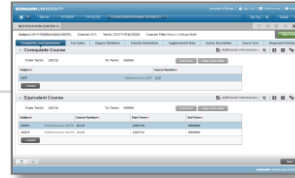
# Extending a Strong Administrative Foundation



Self Service



Admin UI



**ANALYTICS**

**CRM: RECRUITING / STUDENT SUCCESS**

**MOBILE**

Liferay/Luminis

**PORTAL / WEB**

SharePoint-based

**PAYMENT CENTER**

**APIs / Web Services**

Banner XE

Colleague XE

PowerCampus XE

Partners

# The Ellucian XE Vision

The image shows three devices displaying the Ellucian XE software interface:

- Desktop Monitor:** Displays the 'ellucian UNIVERSITY' banner with navigation tabs for 'STUDENT' and 'CATALOG'. The main content area shows 'Course Detail Information (SCADETL)' for 'Introduction to Business' (Course 101, Term: 201610 Fall 2015 (201610)). It includes sections for 'COREQUISITE COURSE' and 'EQUIVALENT COURSE' with search filters and a '+ Insert' button.
- Tablet:** Displays a 'Banner - Faculty Grade Entry' screen. It features a table for 'Select a Course' with columns for Status, Rolloff, Subject, Course, Section, Title, Term, and CRN. The table lists courses like English ENGL (ENGL), Economics ECON (ECON), Accounting ACCT (ACCT), and Core Humanities Seminar (CHSM). Below the table are buttons for 'Roster', 'Incomplete Grades', 'Import Grades', 'Export', 'Add Error', 'Add Warning', 'Add Flash Message', 'Add Message with Prompt', 'Reset', and 'Save'.
- Smartphone:** Displays a mobile version of the Ellucian XE interface, showing a 'Home' screen with a 'Sign In' button and a message: 'Look around without signing in. Tap or double tap to see more.' Below the sign-in button is a message: 'Wrong School? Select another'.

ellucian.

© 2013 Ellucian. All rights reserved.



---

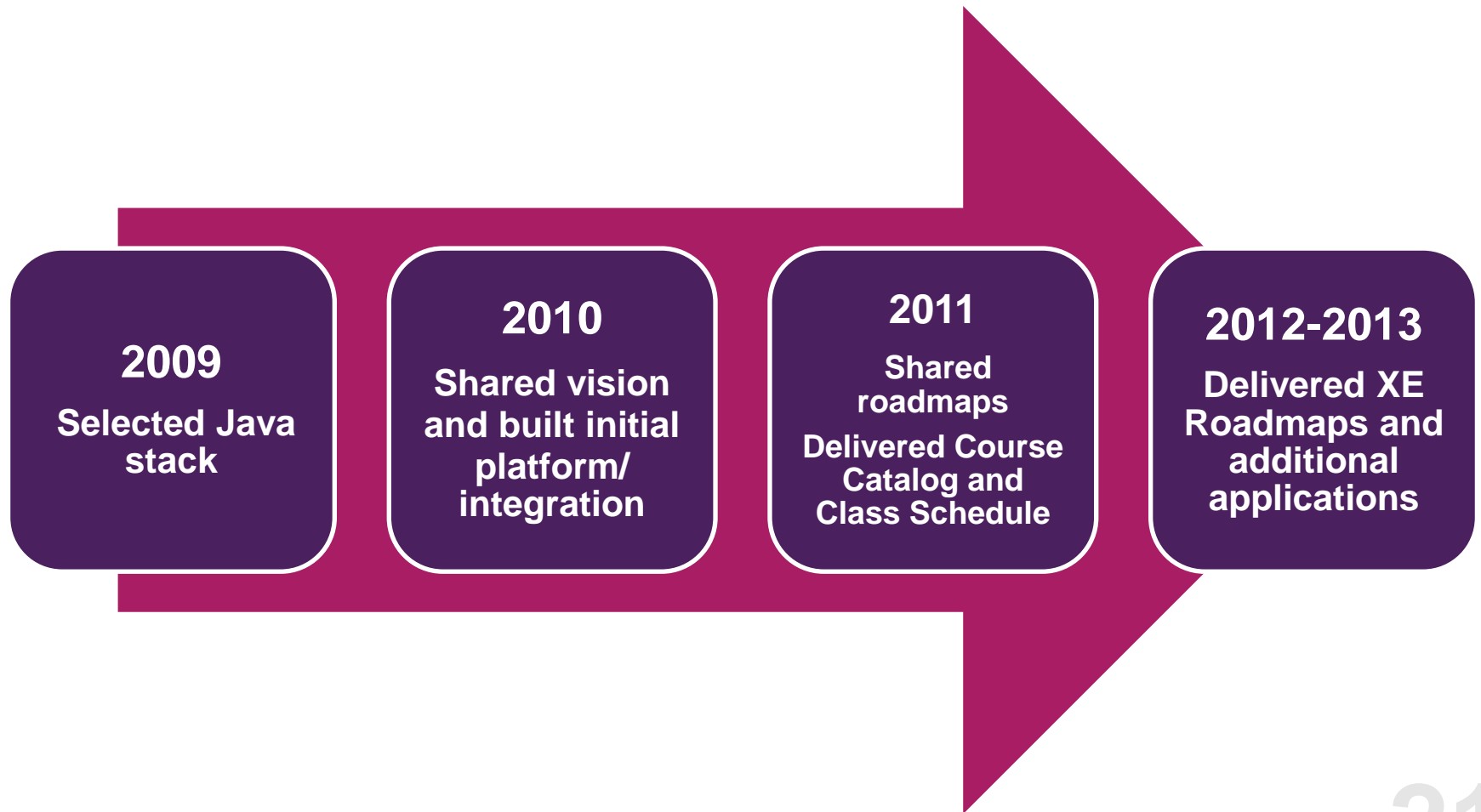
# Banner XE Update

# Driving Your Course to Banner XE



- **READY**
  - Visit **Evolving to Banner XE** on Commons for information what has already been delivered
- **SET**
  - Put Together Your Banner XE Project Plan
- **GO**
  - Get Involved with Banner XE

# From Horizon to Banner XE



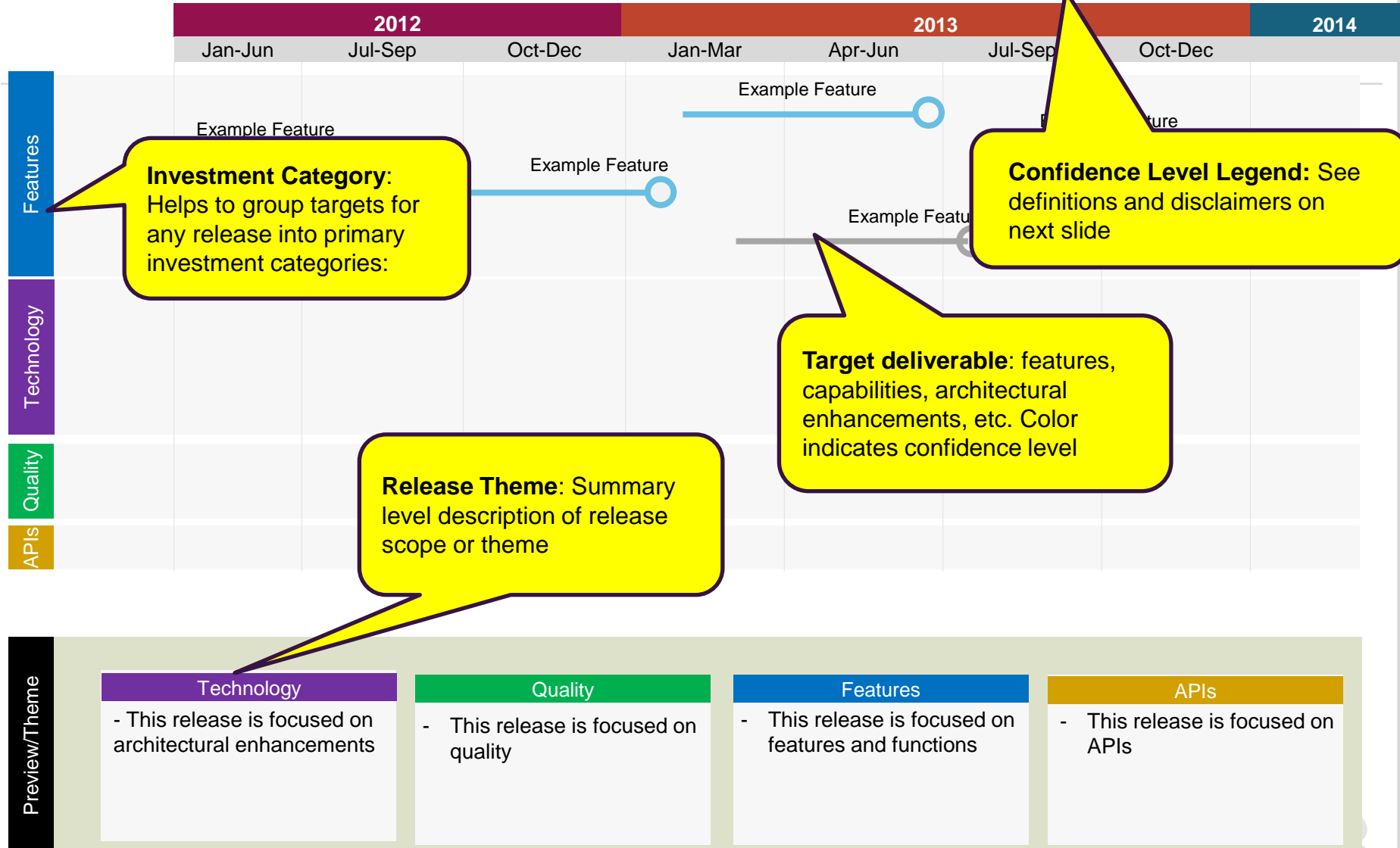
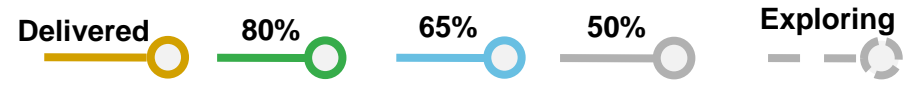
# Roadmap Framing and Confidentiality

---

This information provides a general strategic view of Ellucian's anticipated future offerings. The information in this document is confidential and proprietary to Ellucian and neither the document nor its contents can be disclosed to anyone without a written obligation of confidentiality in place with Ellucian.

The information in this document is not a commitment, promise or other obligation to deliver any material, code or functionality, and it should not be relied upon in making any purchase decision. The document and its contents are subject to change, without prior notice, at the sole discretion of Ellucian.

# Ellucian Roadmap Legend



# Confidence Level Definitions

We use the term **confidence level** to describe the likelihood that the items on the roadmap will be delivered at the dates shown on the timeline. There are many factors that impact our ability to predict delivery including but not limited to:

- **Customer priorities** – Our releases are driven by customer feedback and prioritization. Sometimes the priorities change due to any number of external factors. At any time, we may change the priorities in any given future release to better reflect our customers' interests.
- **Quality Targets** – Each of our product releases undergoes a stringent quality assurance process prior to release. Should a particular capability not meet our quality targets, we may choose to defer that specific capability to a future release or not complete the development of that capability at all.
- **Design Constraints** – In response to customer feedback, we attempt to provide visibility beyond the next product release. In doing so, we share capabilities that reflect customer requests but have not gone through the technical design phase. In some cases, the technical design phase will reveal a larger level of effort and dependencies that make the original timeframe infeasible. Further, the design phase could reveal that the capability is not technically feasible at all or not cost effective resulting in abandonment of effort.
- **Budget Cycles** – For roadmaps that might include visibility beyond the current Ellucian fiscal year budget, all items are subject to financial progress against goals and the availability of funds for that particular project in future budget cycles.
- **Engineering Forecasting Accuracy** – All roadmap items are subject to some level of forecasting accuracy imprecision resulting in certain functionality pushing out to later releases on a roadmap timeline.

The further out the release date, the higher the likelihood that one or more of these factors will impact the accuracy of our roadmaps. That is why we clearly indicate less than 100% confidence for our next release even though it may be scheduled to be released in the short-term, and why we use decreasing confidence levels for items that are further out on the roadmap.



# Banner XE Student

Delivered

80%

65%

50%

Exploring

2012

2013

2014

2015

2016

Jan-Jun

Jul-Dec

Jan - Jun

Jul - Dec

Jan - Jun

Jul - Dec

Jan - Jun

Jul - Dec

Features

Registration Alpha I

Event Management

Attendance Tracking

Registration Alpha II

Advising Self Service

General Person Phase 1

Admissions & Recruiting Phase 1

Registration Beta I

Student Self Service

Academic History

Registration Beta II

Graduation

Registration

Faculty SS

Academic History

Transcript

General Person

Immunizations

Change Major/Program

Program & Course Approvals

Late Withdrawal

Petition/exception Processing

Degree Audit Transfer

Recruitment & Admissions Phase 2

Transfer Articulation

Person Model

Business Process Manager

Security Administration

Fee Assessment

Accounts Receivable

Financial Aid

Location Management

Faculty Load

Configurable Help

Admin Form Replacement

Validation Form Replacement

Job Submission Replacement

Technology

Integrated Github Repository

Universal Installer

Release System

Integrated CAS

Add Data Fields

Page Configuration/Customization

Communications Manager \$\$

Page Builder

Rules Engine

Business Process Manager

Security Administration

APIs

Platform APIs

Advising Roster

Submit Grades

Course/section

Class Schedule

Student Info

Registration

Registration Related

Graduation

Self-service

Student finance

Transcript

Domain APIs

Module Specific APIs

Quality

Quality Releases

Quality

Quality

Quality

Quality

Information presented here is subject to change at any time at the sole discretion of Ellucian and should not be relied upon in making any purchase decision

© 2013 Ellucian. All rights reserved.

October 9, 2013

# Timing is Everything

- First half of the roadmap is designed to impact learning and student success:
  - Self Service for Advisors, Faculty, and Students
  - All Academic Administrative functions
- Second half of the roadmap is designed to have greater impact on efficiencies and student financial management
  - Business Process Management and Automation
  - Fee Assessment, Financial Aid, A/R



The logo consists of a square with a vertical gradient from dark purple at the top to a lighter magenta at the bottom. The word "ellucian." is written in white lowercase letters, positioned towards the left side of the square.

ellucian.

---

# Banner XE Applications

# Banner XE is Available Today!

**Catalog & Schedule – September 2011**  
- Improved global user experience

**Faculty Grade Entry – January 2012**  
- Improved grading tools help better serve students

**Attendance Tracking – September 2012**  
- Record attendance on a learning event  
- Complements Faculty Grade Entry

**Event Management - February 2012**  
- More efficient registration and attendance

# Faculty Grade Entry

1/2012

ellucian. UNIVERSITY

Cyndy K N. Rand-Bunte | Sign Out | 0 Notifications



Tools ▾

Select a Course

Midterm Grades

Final Grades

Gr... St...	R...	Subject	Course	Se...	Title	Term	CRN
		English 0201 (0201)	21	0	Midterm 8.5.1 Enhancement	Fall 2010 (201110)	8008
		English 0201 (0201)	21	1	For Rolling Final Grade Tests	Fall 2010 (201110)	8014
		English 0201 (0201)	21	0	Has Gradebook Components	Fall 2010 (201110)	8003
		English 0201 (0201)	21	FIN	Mids and Finals (some rolled)	Fall 2010 (201110)	8009
		English 0201 (0201)	21	0	MultiPurpose; No SSAWSEC rec	Fall 2010 (201110)	8001
		German 0204 (0204)	101	0	Some students rolled	Fall 2010 (201110)	8006
		English 0201 (0201)	21	0	For Grade Substitution Test	Fall 2010 (201110)	8011
		German 0204 (0204)	101	0	Fully Graded and Rolled	Fall 2010 (201110)	8005
		English 0201 (0201)	21	0	GRAILS is not primary	Fall 2010 (201110)	8010
		German 0204 (0204)	101	5	MultiInstr and MultiMeetTime	Fall 2010 (201110)	8007
		English 0201 (0201)	21	0	Rolled w/SSAWSEC record	Fall 2010 (201110)	8012

Enter Grades

Full Name	ID	Midterm Grade	Final Grade	Rolled	Last Attend Date	Hours Attended
Amix, Pauline H.	HOS00003	A	A		09/15/2011	6
Cotten, Joseph	HOS000015					0.12
Rand-Bunte, Cyndy K N.	CBUNTE3					

Reset

Save

Course Details

Getting Started

## German 0204 101, Section 0

Some students rolled

Course Reference Number: 8006

⚠ 2 Grades Remaining

Eligible: 3

Registered: 3

Graded Final: 1

Course Dates: 08/01/2011 - 12/31/2011

Primary Instructor: Cyndy K N. Rand-Bunte

Secondary Instructor(s):

# Attendance Tracking

9/2012

ellucian. UNIVERSITY

Brenda Jones | Sign Out | Notifications

Banner Self-Service > Attendance Tracker > Mark Attendance

Anthropology I 102, Section 0

09/07/2012

Class

Attendance

Photo	Full Name	ID	Attendance	Monday 8/27	Wednesday 8/29	Friday 8/31	Monday 9/3	Wednesday 9/5	Friday 9/7
	Allan, Alice	210009304	100%	✓	✓	✓	✓		✓
	Allen, Bob	JKP0008	99%	✓	✓	✓	✓		✓
	Arnold, Julie	A00011812	100%	○	○	○	✓		○
	Auriemma, Kathy	A00010758	98%	✓	○	✓	✓		○
	Babbit, Bruce	210009305	86%	○	○	○	○		○
	Babcock, Alana	A00010675	100%	✓	✓	✓	✓		○
	Bailey, Andrea K.	A00010358	100%	✓	✓	✓	✓		○
	Barnyard, Benjamin J.	A00010091	100%	✓	✓	✓	✓		○
	Barr, Gerald	A00010891	96%	✓	✓	✓	✓		○
	Brinkley, Thomas C.	202003009	93%	✓	✓	✓	✓		○

Page 1 of 2 | Show 10 entries

Records found: 18

Update Empty Records to Present

Student Details

Bob Allen

Status: \*\*Registered\*\*  
Attendance Percentage: 98%



This Person is Confidential. Do not share their personal information.

Present

Hours Attended: 00 20

Absence

☒ Absence Notified:

Note:

Extended Absence...



### Create an Account

**Profile Information:** To continue you will need to create a guest account

First Name *	<input type="text"/>				
Last Name *	<input type="text"/>				
Surname Prefix	<input type="text"/>				
E-mail Address *	<input type="text"/>				
Date of Birth (MM/DD/YYYY)	<input type="text"/>				
Phone	<table><tr><td>Country Code</td><td>Area Code</td><td>Number</td><td>Extension</td></tr></table>	Country Code	Area Code	Number	Extension
Country Code	Area Code	Number	Extension		

Street Address	<input type="text"/>
Street Address Line 2	<input type="text"/>
City	<input type="text"/>
State or Province	<input type="text" value="Please Select..."/>
ZIP or Postal Code	<input type="text"/>
Country	<input type="text" value="Please Select..."/>

### Username and Password

Username	<input type="text"/>
Password *	<input type="password"/>
Re-Type Password *	<input type="password"/>

Cancel

Create Account

# Course Catalog

9/2011

ellucian. UNIVERSITY

PBERRY | Sign Out | Preferences | Help



Banner

\*STUDENT

\*CATALOG

Course Detail Information (SCADETL)

Go To...

Tools

NOTIFICATION CENTER: 0



Subject: BUSBusiness BUS Course: 101 Term: 201610 Fall 2015 (201610) Course Title: Introduction to Business

Start Over

Corequisites and Equivalents

Fee Codes

Degree Attributes

Transfer Institutions

Supplemental Data

Course Description

Course Text

Integration Partners

## ▼ COREQUISITE COURSE

Insert Delete Copy | Additional Information | Filter

From Term: 201610

To Term: 999999

End Term

Copy Term Data

Subject Course Number

No Records to Display

+ Insert

## ▼ EQUIVALENT COURSE

From Term: 201610

To Term: 999999

End Term

Copy Term Data

Subject Course Number Start Term End Term

No Records to Display

+ Insert



Save

ellucian.



# Class Schedule

9/2011

ellucian. UNIVERSITY

PBERRY | Sign Out | Preferences | Help

Home Banner Student (\*STUDENT) Class Schedule (\*SCHEDULE) Schedule (SSASECT)

Go To...

Tools

NOTIFICATION CENTER: 0



Term: 201610 Fall 2015 (201610) CRN: 10013 Subject: BUS Course: 101 Title: Introduction to Business

Start Over

Course Section Information Section Enrollment Information Meeting Times and Instructor Section Preferences

▼ COURSE SECTION INFORMATION \*

+ Insert - Delete Copy Additional Information Filter

## Section Type

Course: 10013

Reference  
Number

Section Type ☒ Traditional Term Section ☐ Open Learning Section

## Section Detail Information

Subject: BUS Business BUS

Course Number: 101

Title: Introduction to Business

Section \* 7

Cross List: LP

Campus \* M Main

Status \* A Active

Integration: WEB Instructional Method  
Partner

Grade Mode: S Standard Letter

Session: E Evening

Special Approval: IN Instructor Approval Required

Attendance Method: P Positive Attendance

Weekly Contact:

☐ CEU Indicator

☒ Print

☒ Voice Response and Self-Service Available

☒ Gradable

☐ Tuition and Fee Waiver

☐ Long Title Exists

☒ Comments

Last updated by: lparrish on 05/11/2012

Save



---

# Banner XE Development Partners

# Banner XE Development Partners

---

- Each XE project has a set of partners
- Assist the development teams:
  - Weekly calls
  - Requirements definition
  - Page design – wireframes
  - Process flow
  - Alpha testing
  - Controlled release testing – and adoption
  - 6, 13, 12, 12
- Critical to XE success!

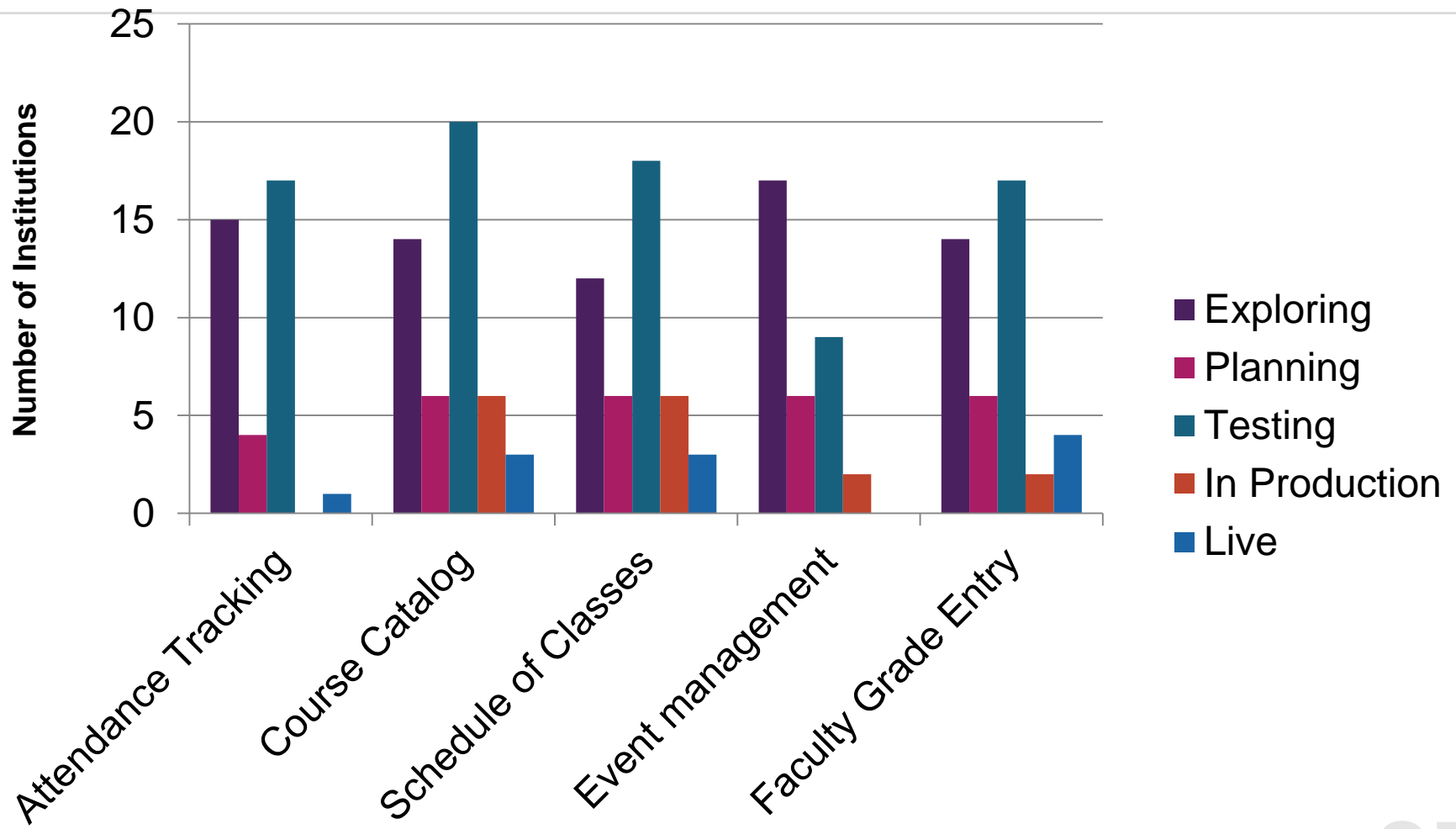
The logo for ellucian. is a square with a vertical gradient from dark purple at the top to a lighter magenta at the bottom. The word "ellucian." is written in white, lowercase, sans-serif font, positioned in the upper half of the square.

ellucian.

---

# Supporting 81 Early Adopters

# Banner XE customer adoption



# Early Adopter Cohort 1 (8)

---

- Georgia Institute of Technology
- Purdue University Main Campus
- Shippensburg University of Pennsylvania
- Texas Tech University
- The University of Alabama
- University of Illinois University Administration
- University of Notre Dame
- University of Oklahoma Norman Campus

# Early Adopter Cohort 2 (14)

---

- Abu Dhabi Vocational Education and Training Institute (ADVETI)
- Board of Regents of the University System of Georgia
- Brown University
- Central Oregon Comm Coll
- Drew University
- Fordham University
- Khalifa University of Science, Technology and Research (KUSTAR)
- Lansing Community College
- Northwest Missouri State University
- Oswego State College (SUNY)
- Portland State University
- United Arab Emirates University Islamic Institute
- Virginia Polytechnic Institute and State University
- Wichita State University

# Early Adopter Cohort 3 (16)

---

- BI Norwegian Business School
- Bucknell University
- Drexel University
- Florida Atlantic University
- Florida Gateway College
- Harding University (Main Campus)
- Indiana State University
- Kwantlen Polytechnic University
- Liberty University
- Middlesex University
- Pacific Lutheran University
- Rose-Hulman Institute of Technology
- St Louis Community College
- Stephen F. Austin State University
- University of North Carolina at Greensboro
- University of North Carolina General Administration



# Early Adopters not currently in a Cohort (36)

- Athens State University
- California University of Pennsylvania
- Collin County Comm Coll District
- Colorado Seminary (Univ of Denver)
- Fisk University
- Hamline University
- Hofstra University
- Indiana University of Pennsylvania
- Kalamazoo Valley Community College
- King Fahd University of Petroleum and Minerals (KFUPM)
- Metropolitan State University of Denver
- Missouri Southern State University
- Pace University
- Pima County Community College
- Plymouth State University
- Qatar University
- Rice University
- Rowan University
- San Mateo County Community College District Office
- Santa Barbara City College
- Seattle Pacific University
- Snow University (Utah)
- Southern Utah University
- St. Catherine University
- The College of Saint Scholastica
- Universidad de Monterrey
- Universite Libre de Bruxelles - ULB
- University of Greenwich
- University of Montana - Missoula
- University of Northern Colorado
- University of Southampton
- Valencia College
- Wake Forest University
- Weber State University
- West Virginia Network for Education
- Yale University

# Clients Live on Banner XE Applications

---

- Brown University
  - Course Catalog
  - Class Schedule
- Purdue University Main Campus
  - FGE limited rollout
- Shippensburg University of Pennsylvania
  - Course Catalog
  - Class Schedule
  - Faculty Grade Entry
- St. Louis Community College
  - Attendance Tracking
- University of North Carolina at Greensboro
  - Course Catalog
  - Class Schedule
- University of Oklahoma Norman Campus
  - Faculty Grade Entry
- Wichita State University
  - Faculty Grade Entry limited rollout

# Customers Awaiting the 9.2 Versions

- Address Performance concerns
- Address Quality issues
- “Big Test” environment – ODS, Luminis, DegreeWorks – validate similar to customer
- Scale registration stand alone and a mix of applications to 2500 concurrent users
  - 2000 Self-Service, 500 admin
- Create Banner XE Sizing Guide
- Environment Information - 4 application servers- 16GB RAM, 4CPU
- 28,281 students adding and dropping
- 141,405 total number of transactions

The logo for ellucian. is a square with a vertical gradient from dark purple at the top to a lighter magenta at the bottom. The word "ellucian." is written in a white, lowercase, sans-serif font, positioned in the upper half of the square.

ellucian.

---

# XE Projects in Development

# XE Projects in Development

---

- XE Registration
  - Controlled Release 1 (CR 1) – Q4 2013
  - General Availability – Q4 2014
- XE Advising – Q4 2013
- XE Academic History – Q4 2014
- Banner Communications Management – Q2 2014
- XE Admissions & Recruiting – 2014 TBD

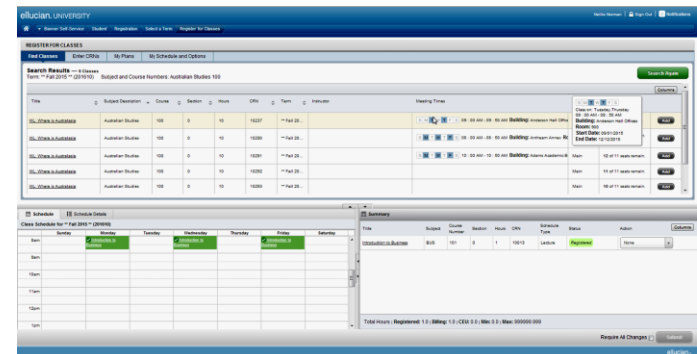


---

# XE Registration

# What's Changing

- All registration related administrative forms
- All registration related SSB
  - Students and advisors
- New student & advisor pages
- New administrative pages
  - Support advising and new registration models
- Configuration of pages
  - Field, button and tab labels
  - Page position



# Persona Focus

- Students first
  - Alpha I, Alpha II, Controlled release I
- Advisors and Administrators next
  - Controlled Release II – Q1 2014
  - General Release – Q4 2014



- ***XE Registration Session after lunch today***



The logo for ellucian. is a square with a vertical gradient from dark purple at the top to a lighter magenta at the bottom. The word "ellucian." is written in white, lowercase, sans-serif font, positioned in the upper half of the square.

ellucian.

---

# Academic Advising

# Advisor Self Service

---

## **Purpose:**

- Enable Advisors, Tutors, and Mentors to view (phase one) and work with (phase two) a profile of key institutional information to inform the best decisions and directions possible.

## **Target Deliverables:**

- All functionality inherits the principles of usability, extensibility, configurability, and security
- Advising Roster, with key data available at first glance
- Student profile with ~2 dozen default data elements

Advisee Listing		Term: Fall 2014					Filter ▾
	Name and ID ▾	Program ▴ ▾	Primary Major ▴ ▾	Class ▴ ▾	Registered	Academic	
	<a href="#">Boggs, Wade</a> 230987	Lorem	Print Design	ABC0065	Yes	Good	
	<a href="#">Chandler, Rick E</a> 294456	Ipsum	Digital Design	ABC0158	Yes	Good	
	<a href="#">Chase, Ronald</a> 615098	Doler	Agriculture	AB00068	Yes	Satisfac	
	<a href="#">Clark, Barbara T</a> 518156	Lorem	Horticulture	ABC0862	No	Exceller	
	<a href="#">Dent, Jane</a> 561815	Emit	Bio Molecular Science	ABC0118	Yes	Good	
	<a href="#">Fielder, Steve C</a> 988018	Ipusm	Mid Wifery	ABC0668	No	Poor	
	<a href="#">Garvy, Frank Josephious</a> <a href="#">long name with Wrap</a> 655180	Lorem	Instruction Education	ABC1135	Yes	Exceller	
	<a href="#">Griffey, Cecilia</a> 651806	Doler	Sports Medicine	ACB6816	Yes	Good	
	<a href="#">Griffiths, Martha</a> 884862	Doler	Team Management	ABC0525	Yes	Poor	
	<a href="#">Harcourt, Dayna</a> 818385	Emit	Communications	ABC0084	No	Satisfac	

**Student Overview** | **Getting Started**

**Martha Griffiths** 884862

**CONFIDENTIAL**

[view profile](#)

[email student](#)

**Student Details**

<b>GPA:</b>	3.555
<b>Level:</b>	Undergraduate
<b>Class:</b>	Junior
<b>Status:</b>	Active
<b>Status Type:</b>	Continuing
<b>Campus:</b>	Western
<b>Enrollment Status:</b>	Registered
<b>Applied to Graduate:</b>	No
<b>Degree:</b>	Bachelor of Science
<b>Level:</b>	Undergraduate
<b>Study Path:</b>	UG:BS-ENGINEERING
<b>Program:</b>	Bachelor of Chemical Engineering
<b>College:</b>	College of Engineering
<b>Major:</b>	Chemical Engineering
<b>Department:</b>	Chemical Engineering
<b>Concentration:</b>	Applied Math
<b>Minor:</b>	Biology
<b>Primary Advisor:</b>	<a href="#">Jane Smith</a>

Marta Griffiths

884862



CONFIDENTIAL

- Curriculum & Courses
- Prior Education & Testing
- Athletics & Extra-Curricular
- Additional Links
  - Academic Transcript
  - Degree Evaluation
  - Registration
  - Application to Graduate
  - Week at a Glance
  - Schedule by Centric Period
  - Faculty and Advisor
  - Security Information

Bio Information

Email: Marta.Griffiths@ellucianuniversity.edu

Phone: 555-555-1455

Gender: Female

Date of Birth: 08/14/1987

Ethnicity: Caucasian

Race: Fast

Emergency Contact: Jane Griffiths

Emergency Phone: 305-555-5256

General Information

Level: Undergraduate

Class: Junior

Status: Active

Status Type: Continuing

Residency: Out of State

Campus: Western

First Term Attended: Fall 2009

Matriculation Term: Fall 2009

Last Term Attended: Spring 2013

Enrollment Status: Registered

Leave of Absence: Jan 1-March 31, 2014

Reason: Lorem ipsum dolor emit. Sit edon

GPA & Hours

Undergraduate

Institutional Hours: 30

GPA: 3.50

Transfer Hours: 56

GPA: 3.55

CURRICULUM

Primary Secondary

Degree: Bachelor of Science

Study Path: UG:BS-ENGINEERING

Level: Undergraduate

Program: Bachelor of Chemical Engineering

College: College of Engineering

Major: Chemical Engineering

Department: Chemical Engineering

Concentration: Applied Math

Minor: Biology

Concentration: German

Admit Term: Fall 2009-2010 (Finaid Term)

REGISTERED COURSES

Course Title	Details	CRN	Hours	Registration Status	Instructor
Art History	ARTH 101	11012	3.00	Registered	Frank Johnson
History of Integration	HIST 100	11014	3.00	Registered	John Smith
Literature II	LIT102	11030	3.00	Withdrawn	Frank Partnoy
Cost Management	AACCT320	11250	3.00	Registered	Richard P Feynman

Total Hours | Registered: 12.00 | CEU: 0.00

# Banner Communication Management

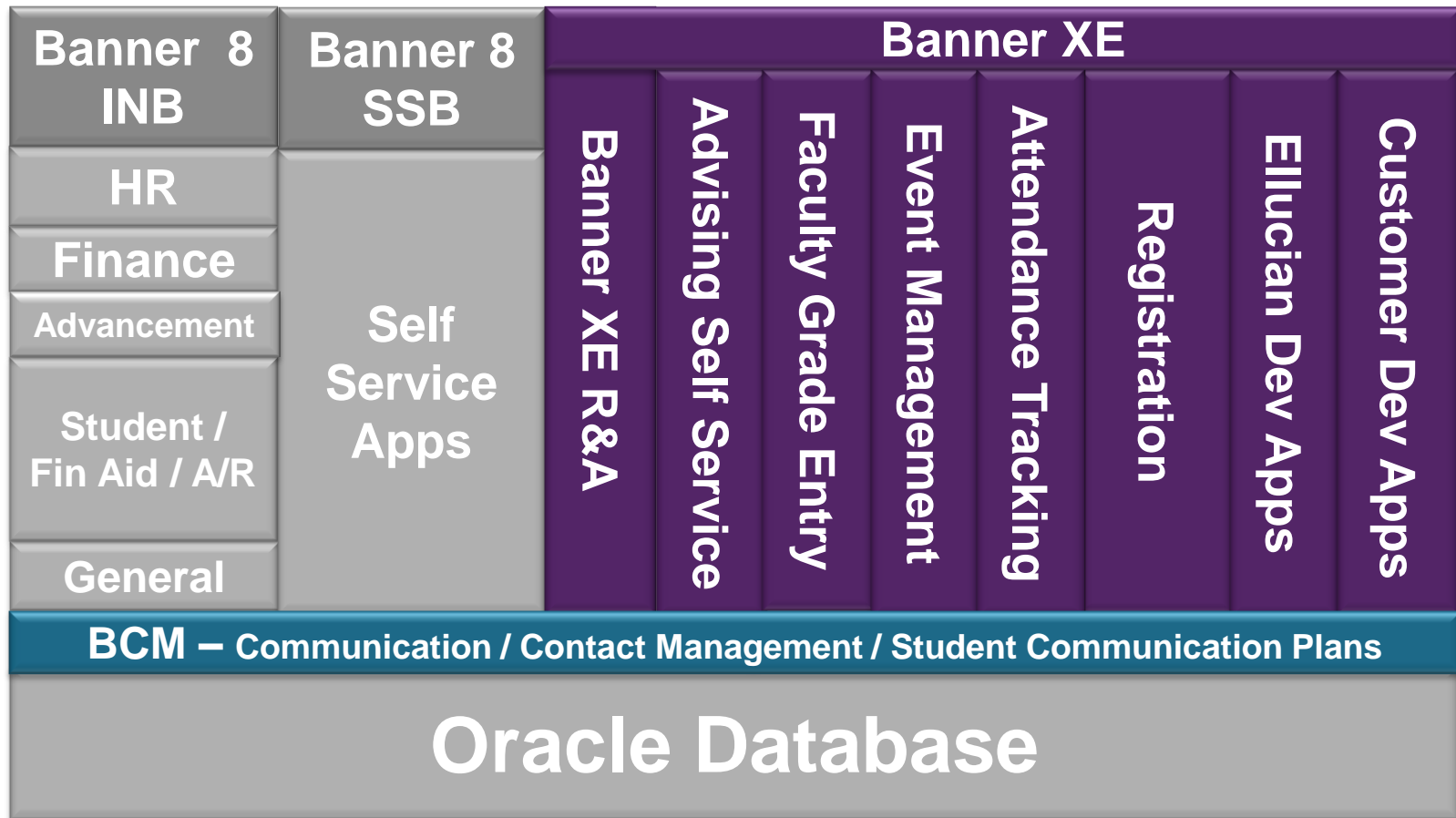
## Phase 1 Focus

- Expand Data Access including Localizations and Integration with Banner ODS
- Enhance tactical and operational communication (Email, SMS, Paper, Targeted Announcements) with Prospects, Students, Employees, Vendors
- Improve Ability to Track and View Contacts, Comments, Notes in multiple functional areas in Banner
- Integration with Banner XE Applications such as Banner R&A XE, Banner Event Management XE, Banner Registration XE

	<i>Usability</i>	<i>Features/ Functionality</i>	<i>Single Global Product</i>	<i>Configuration</i>	<i>Extensibility</i>	<i>Scalability</i>	<i>Cloud Delivery</i>
Data Access	X	X	X	X	X	X	
Multi Channel Communication	X	X	X	X	X	X	
Student Communication Plan Management	X	X	X	X	X	X	
Contact Management	X	X	X	X	X	X	
Template Management	X	X	X	X	X	X	X

- BCM Direction – Aug 2013
- DPG Formation – August/Sept
- Kickoff – Q4 2013
- GA – 2014

# Banner Communication Management XE



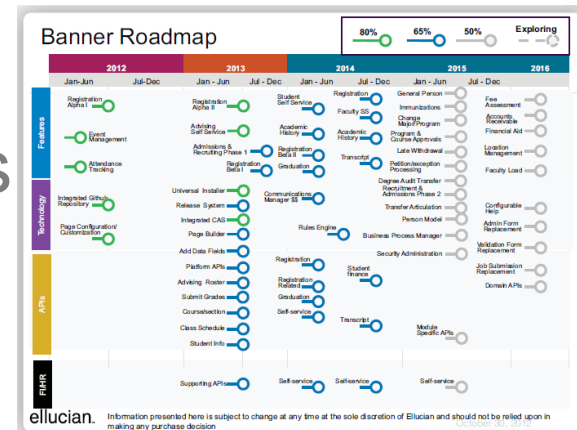


---

# Summary

# Where to learn more about Banner XE

- Visit the Banner Commons
  - Evolving to Banner XE page
    - Read the FAQs
    - Functional and technical webinars
    - Explore the Banner XE digital shorts
- Product Roadmaps
  - [ellucian.com/roadmaps](http://ellucian.com/roadmaps)





# Driving Your Course to Banner XE



- **READY**
  - Visit **Evolving to Banner XE** on Commons for information what has already been delivered
- **SET**
  - Put Together Your Banner XE Project Plan
- **GO**
  - Get Involved with Banner XE

The logo for ellucian. is a square with a vertical gradient from dark purple at the top to a lighter magenta at the bottom. The word "ellucian." is written in white, lowercase, sans-serif font, positioned in the upper half of the square.

ellucian.

---

Thank You!

[ed.hauser@ellucian.com](mailto:ed.hauser@ellucian.com)